



Summer 2009 School of Ministry Housing Option #1 *The Residence Inn Brentwood*

Address: 206 Ward Circle, Brentwood, TN 37027

Phone & Web: (615) 371-0100; Marriott.com

Cost: \$1350/person (double occupancy) for 8 weeks

Details: Room is a Studio Suite with 1 Queen bed and 1 Queen pull-out sofa, plus a full kitchen. This price includes all taxes. It does not include the extra week for MPD training, although the same room rate is available nightly for the week of the MPD training (if you stay for the MPD training week, this will cost \$165/person (double occupancy)).

Includes at no extra cost:

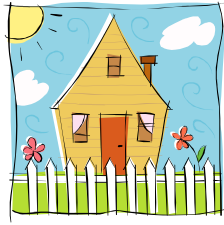
- Breakfast 7 days/week
- Light Dinner 2 days/week
- Internet in room and WiFi throughout hotel
- Cable
- Pool/Whirlpool/Small Fitness Room
- Basketball Courts
- Grocery shopping service
- Printing/Computer use
- Daily Newspaper
- Housekeeping
- Pass to local workout center (7 miles away)

Does *Not* Include:

- Transportation
- Laundry service (coin laundry facilities on-site)

Other things to keep in mind about the hotel:

- Depending on each student's food needs, the total cost for this option is around \$500 more than staying with a host family.
- One mile from the School of Ministry classroom
- Rooming with other SOM students provides a good chance to get to know each other
- Many restaurants nearby
- Two miles from Bethel Brentwood
- Although transportation is not provided, it's much easier for a student without transportation to arrange carpooling with another student staying in the hotel.



Summer 2009 School of Ministry

Housing Option #2

Local Host Family

Location: Nashville area (Davidson or Williamson Counties)

Cost: \$1250/person for 8 or 9 weeks

Details: We ask each host family to provide the student with his/her own bed and a place to keep his/her clothes. If the student will be sharing a bathroom with other students or family members, it will only be with the same gender.

Includes at no extra cost:

- Meals
- Bed linens, towels, hangers
- Laundry facilities

Does *Not* Include:

- Transportation
- Office supplies/printing
- Housekeeping

Other things to keep in mind about host homes:

- The current cost of gas in Nashville is \$2/gallon. Several of our host homes are quite a distance from the School of Ministry classroom, so gas will be an expense to consider.
- Most families are only able to host one student. This means that a hosted student will spend a good deal of time away from other students.
- Host families are not required to provide WiFi, Cable, Newspaper or other amenities that a hotel provides.